

GREAT GUINS

INDUCTION ELECTRICAL LOG

FILING NO. **23944**

COMPANY **TRIPLE SEVEN (Meredith Williams)**

WELL **GRIMMER "2"**

FIELD **WILDCAAT**

COUNTY **ADAMS** STATE **ILLINOIS**

LOCATION: **990 FSL - 330 FEL - NW 1/4**
ARTL. - 5 1/2" SW, NW, NW

SEC **6** TWP **21N** RGE **5W**

Permanent Datum **GL** Elev. **697.683**

Log Measured from **KR** Drilling Measured from **KR**

Elevations: **KR 700**, **GL 683**

Date **9-26-82**

Run No. **ONE**

Depth-Driller **1144**

Depth-Logger **1142**

Bottom Logged Interval **1141**

Top Logged Interval **120**

Casing-Driller **7" @ 120**

Casing-Logger **7" @ 121**

Bit Size **5 7/8**

Type Fluid in Hole **WB MUD**

Density and Viscosity **@**

pH and Fluid Loss **—**

Source of Sample **Flowline**

Rm @ Meas. Temp. **3.5 @ 71 °F**

Rmf @ Meas. Temp. **2.7 @ 71 °F**

Rmc @ Meas. Temp. **3.7 @ 71 °F**

Source of Rmf and Rmc **Charts**

Rm @ BHT **3.1 @ 81 °F**

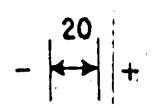
Time Since Circ **2 hours**

Max. Rec. Temp. **31 °F**

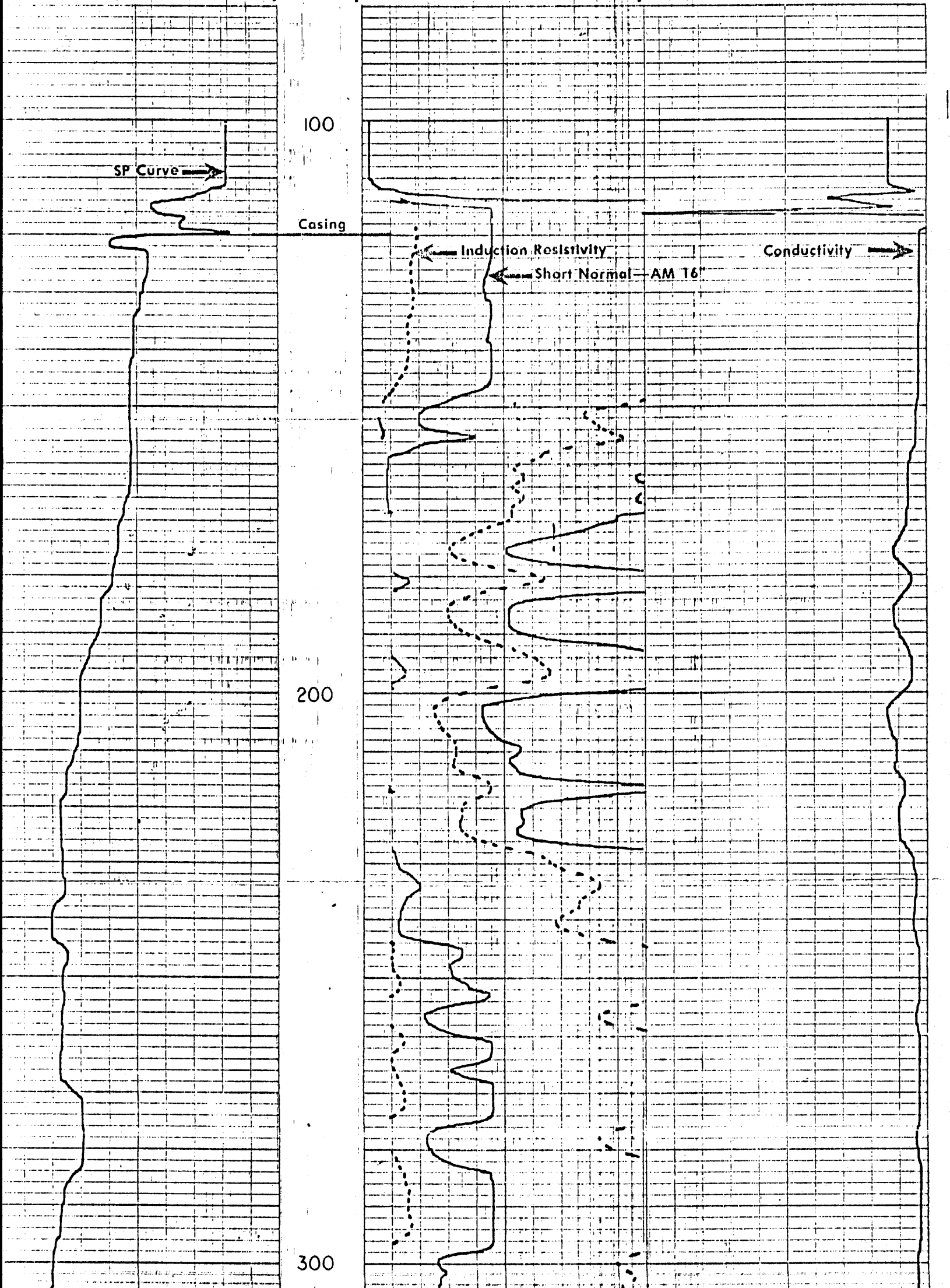
Equip. No. and Section **31 1H2**

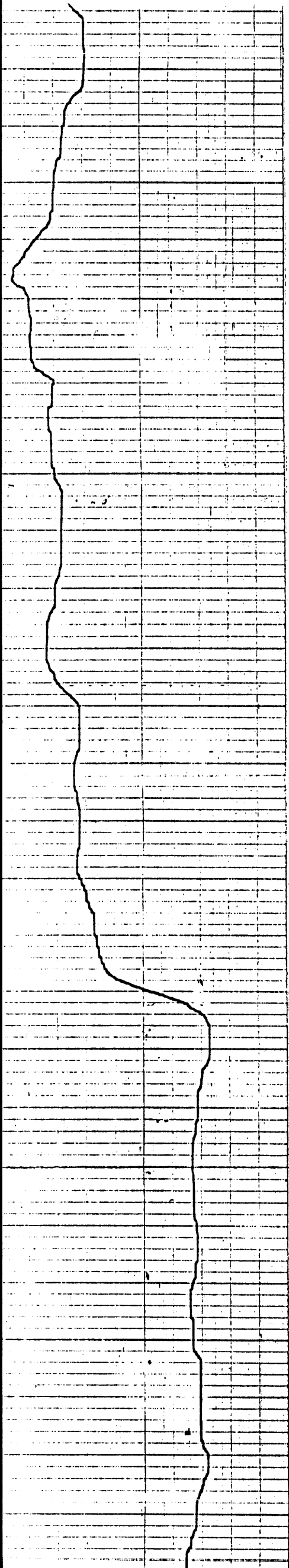
Changes in Mud Type or Additional Samples				Scale Changes			
Sample No.	Type Log	Depth	Scale Up Hole	Scale Down Hole			
9-26 ONE	TEL-SP	1142	5" + 2"	2" + 5"			
			Linear	Linear			
Equipment Data							
Run No.	Tool Type	Tool Position	S. O.	Tool No.	Elec. No.	Panel No.	Other
ONE	OFF 40	FREE	NONE	113	31	-	

DETAIL LOG

SPONTANEOUS POTENTIAL millivolts	Depths	CONDUCTIVITY 1000 millimhos/m ohms m ² /m	
		1000	0
		6 Coil 40" INDUCTION 500	
		2000	1000
		RESISTIVITY ohms. m ² /m	
		SHORT NORMAL A - 16" - M - 18'8" - N - ∞ - B	50

SHORT NORMAL	
A - 16" - M - 18'8" - N - ∞ - B	
0.	50
0	500
40"	
INDUCTION RESISTIVITY	
0	50
0	500

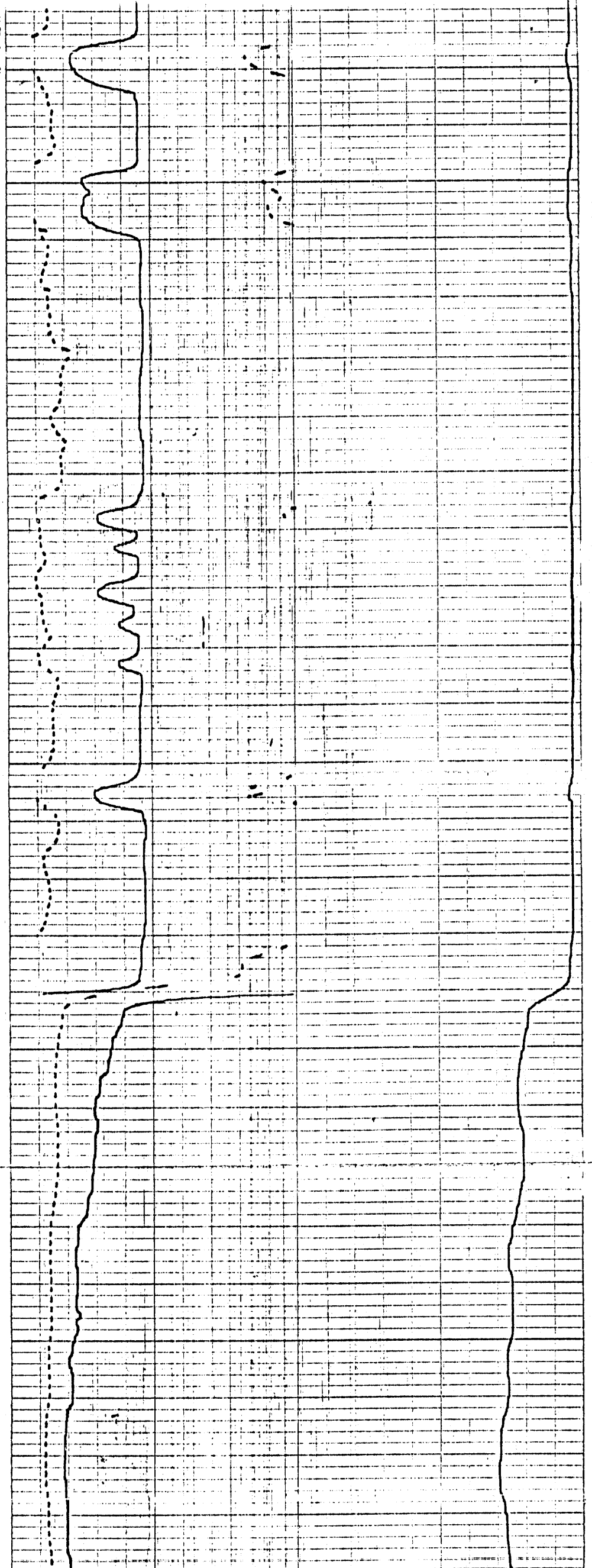


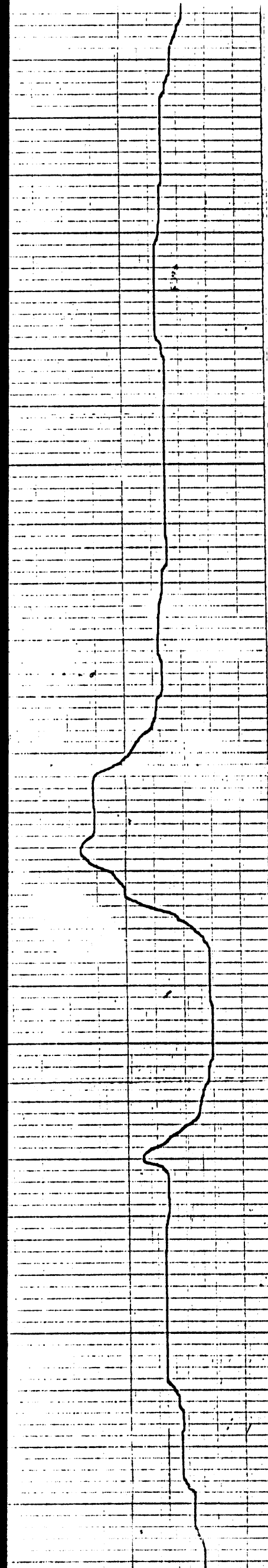


300

400

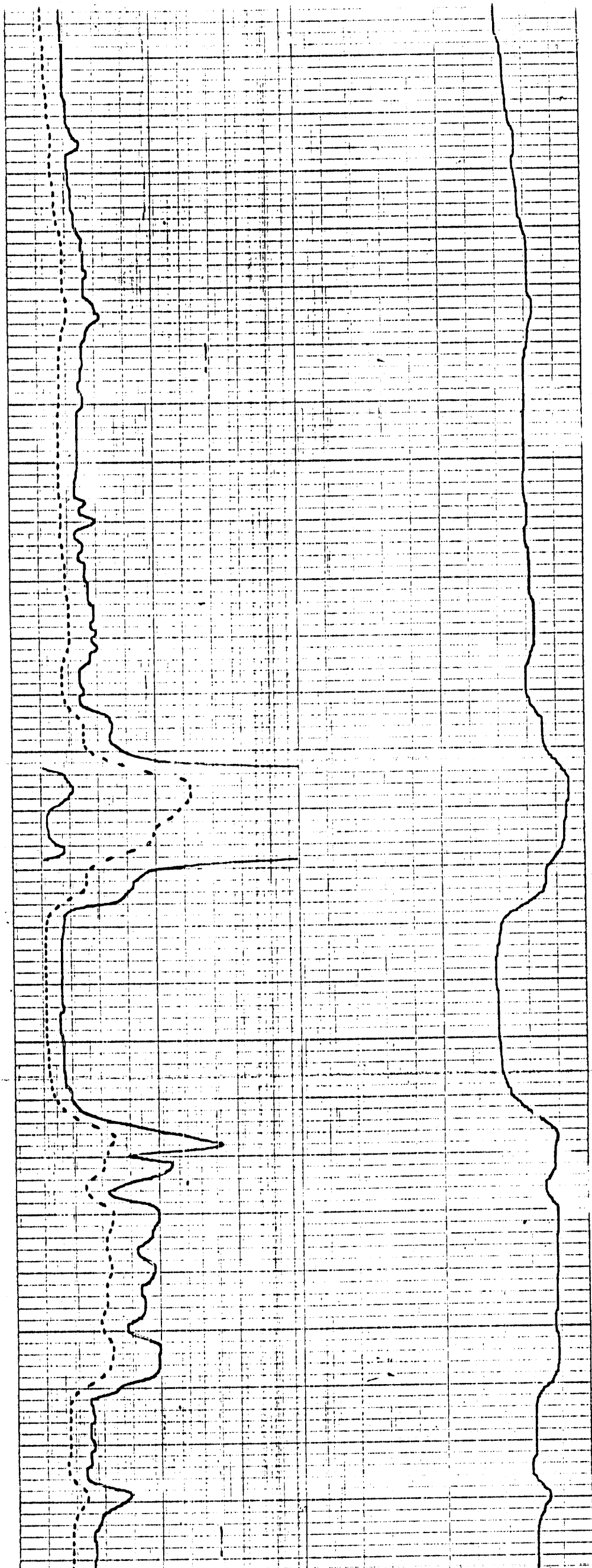
500

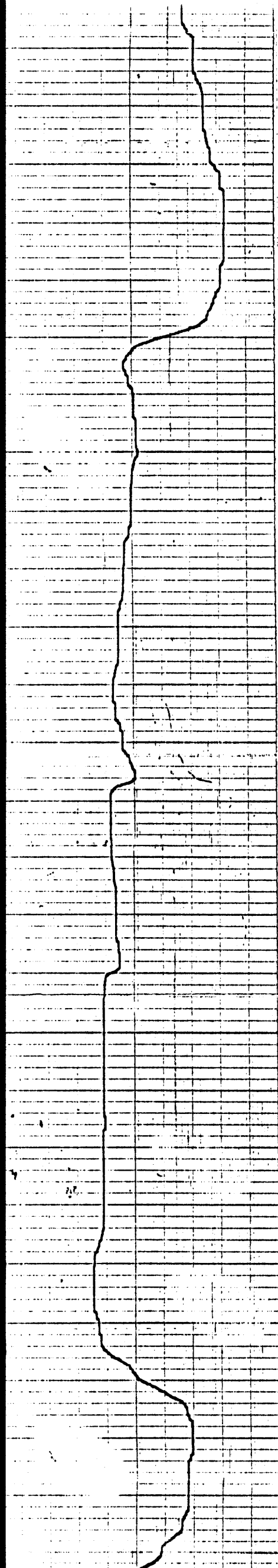




600

700

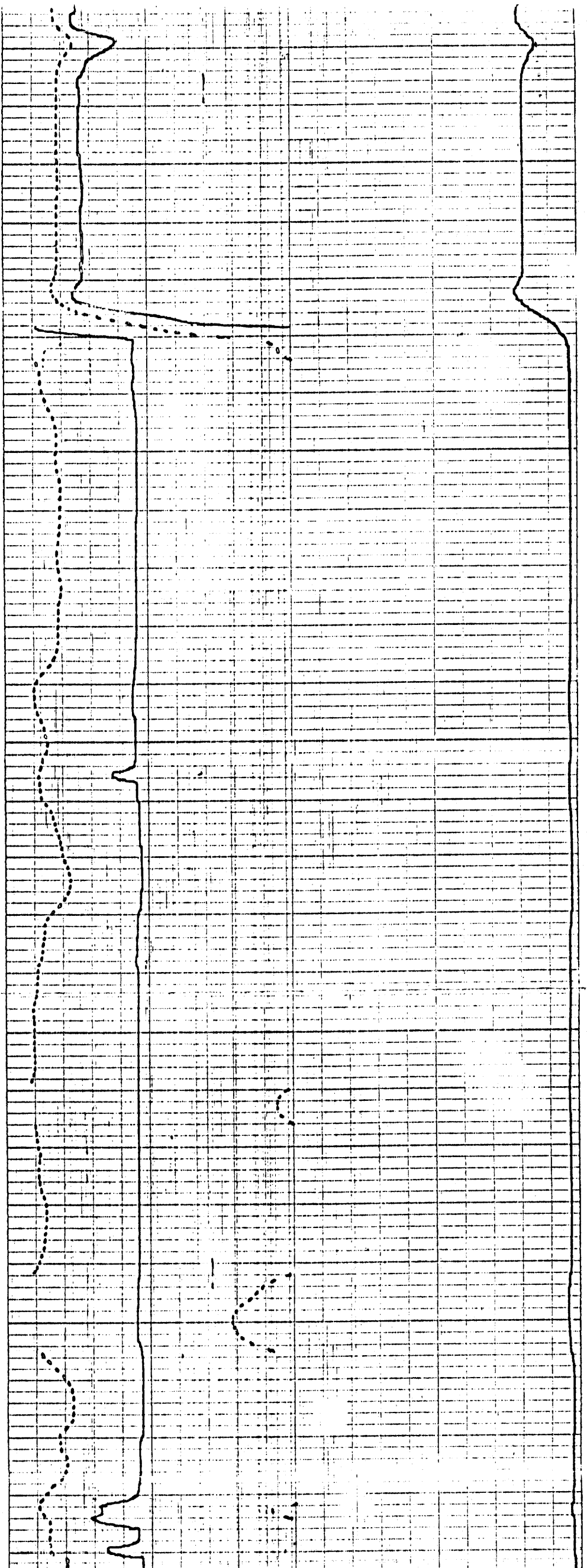


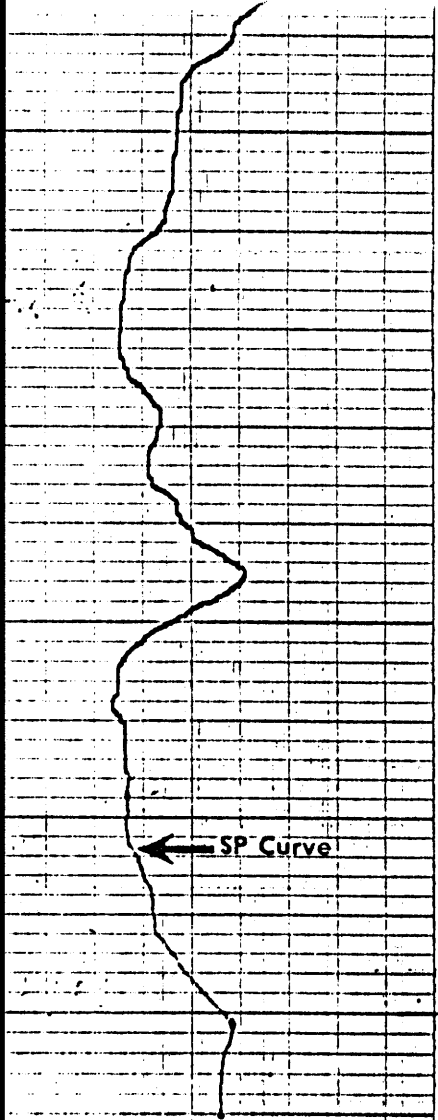


800

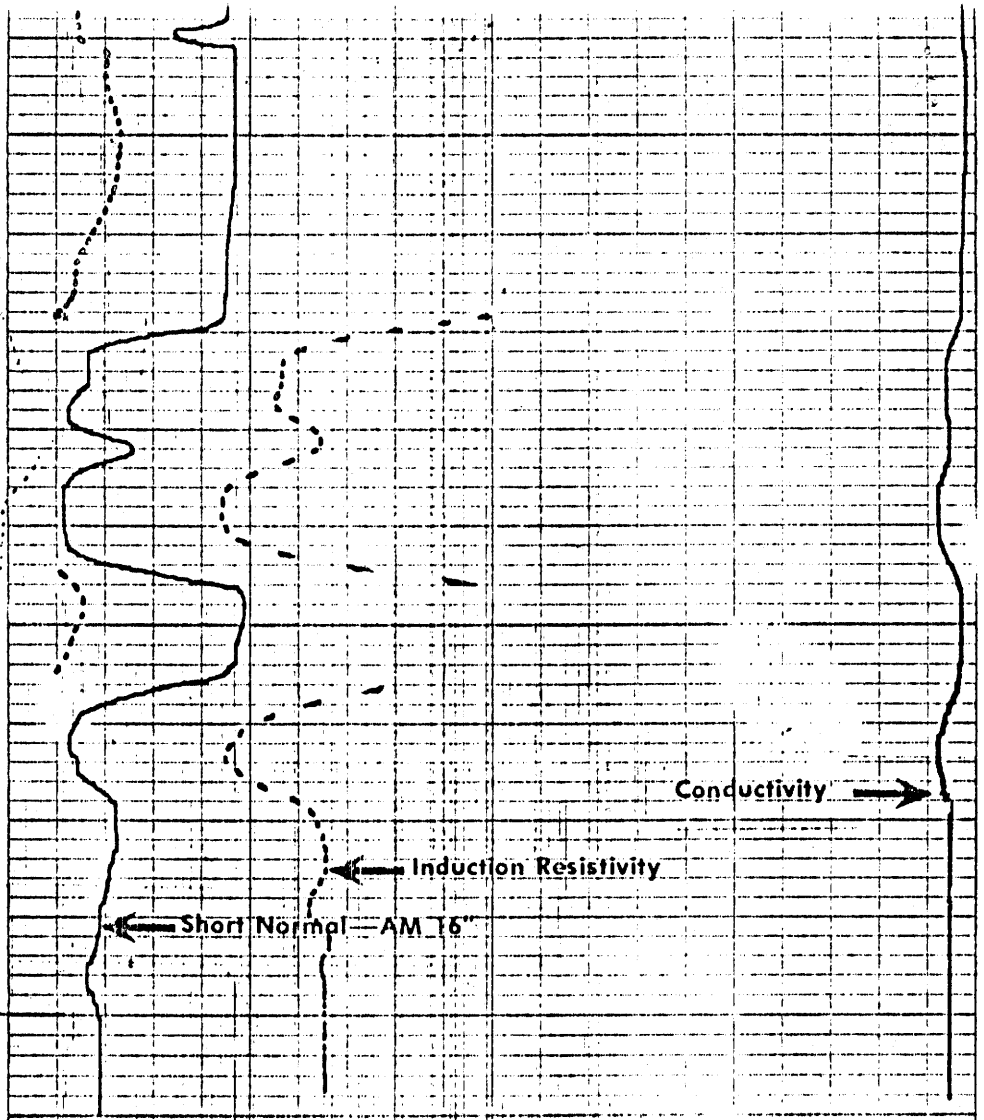
900

1000





1100



FR

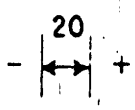
40"	
INDUCTION RESISTIVITY	
0	50

0	500

SHORT NORMAL	
A - 16" - M - 18'8" - N - 2" - B	
0	50

0	500

RESISTIVITY	
ohms. m ² /m	



6 Coil 40"	
INDUCTION	
1000	500

2000	1500

1000	1000

SPONTANEOUS POTENTIAL
millivolts

Depths

CONDUCTIVITY
millimhos/m = 1000
ohms. m²/m

REPEAT SECTION